

FINGERTEC



UPLOADING USER FINGERPRINT TEMPLATES BY USING TERMINAL USER CONTROL

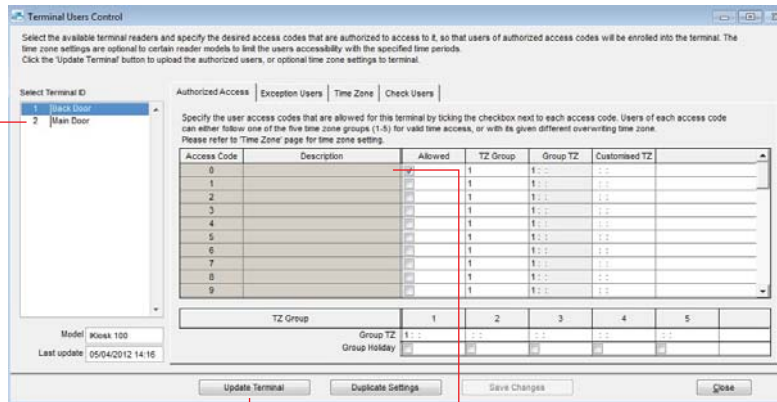
SUGGESTIONS & SOLUTIONS FOR TCMS V2

You can choose to use Terminal User Control to upload user fingerprint templates to FingerTec readers. Anyway you will only able to use this page to upload fingerprint templates to FingerTec readers with door access control function (AC800, AC900 and AC800Plus series). This is because these 3 models are equipped with time zones settings.

Please follow the steps below to upload fingerprint templates of users,

Step 1

Terminal User Control



Select terminal to upload user fingerprint templates.

Click here to proceed

Choose to use default time zone 1, group time zone 1 and access code 0. As default, these settings represent all day access for every user.

Step 2

Start of uploads process

Tick checker below to select the data terminal:-

Select	ID	Group	Description	Status
<input checked="" type="checkbox"/>	1		Back Door	
<input type="checkbox"/>	2		Main Door	
<input type="checkbox"/>				
<input type="checkbox"/>				
<input type="checkbox"/>				
<input type="checkbox"/>				
<input type="checkbox"/>				
<input type="checkbox"/>				
<input type="checkbox"/>				
<input type="checkbox"/>				

Okay Cancel

Click here to start the process.

Step 3

End of process

Upload Users and Time Zones to Terminal

Use this function to upload all authorized users and fingerprints based on specified access codes from PC to the selected terminal, together with the optional access time zones.

Terminal ID: Back Door

Update data: User Data Time Zone

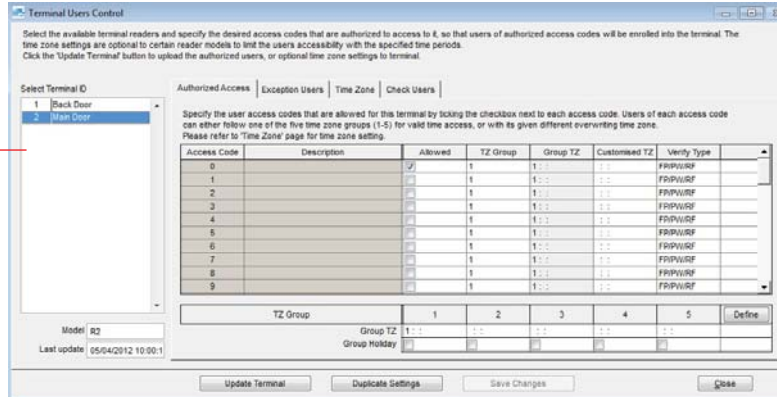
Connecting device 1 [192.168.1.30] ...Ok
 Synchronising users ...Ok
 Uploading users ...

Select Terminal ID Close

Click here to end the process.

Step 4

Choosing to upload to other units.



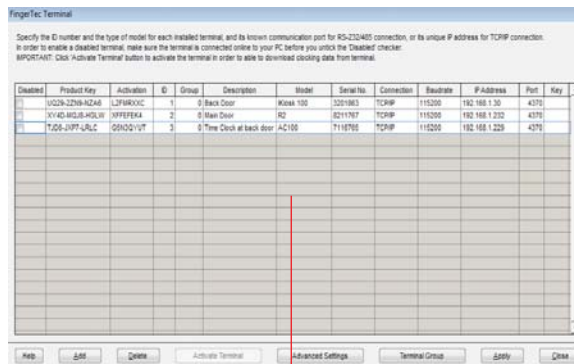
Click to choose for another unit and repeat step 1 to 3 to upload user fingerprint templates.

Alternatives for AC100, TA100 or AC100Plus

If you would like to use this method to upload fingerprint templates into AC100, TA100 or AC100Plus, you will need some extra steps.

Step 1

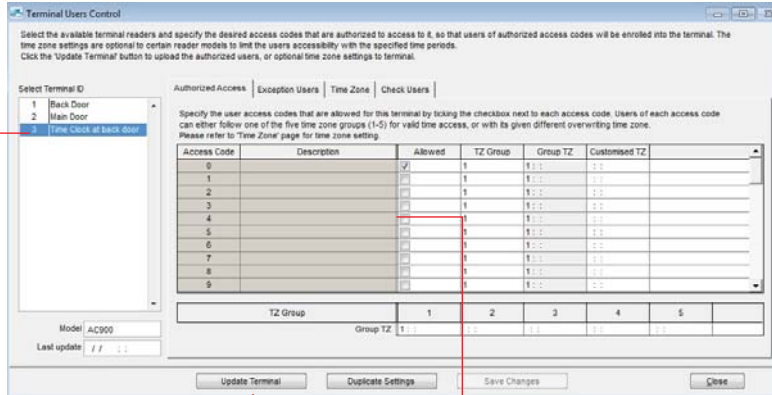
Changing the product model to AC800 or AC900 in Terminal Settings



Click to change the model from AC100 to become AC900.

Step 2

Choosing the terminal to upload fingerprint templates



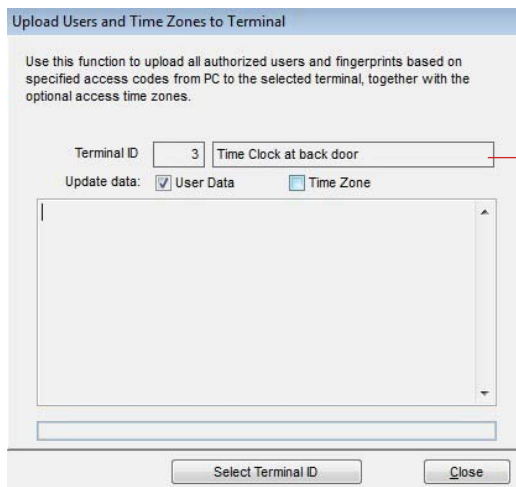
Select terminal to upload user fingerprint templates.

Click here to proceed

Choose to use default time zone 1, group time zone 1 and access code 0. As default, these settings represent all day access for every user.

Step 3

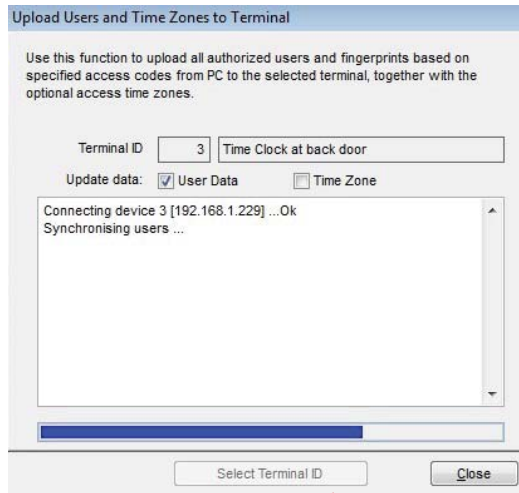
Start of process



Uncheck this check box to ignore the time zones settings.

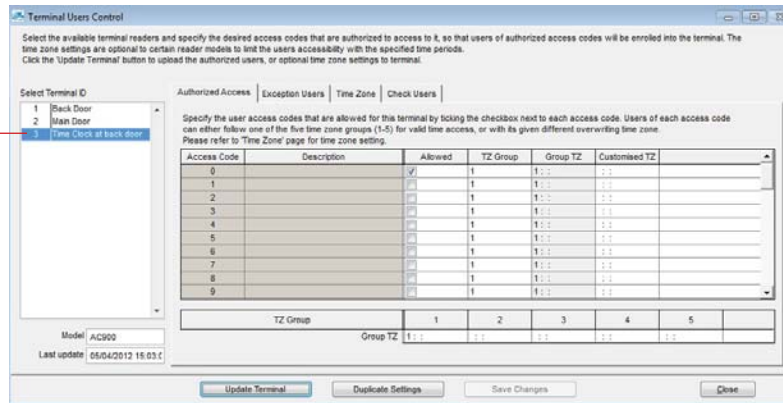
Click here to start the process

Step 4
End of process



Click here to start the process.

Step 5
Choosing to upload to other units



Click to choose for another unit and repeat step 1 to 3 to upload user fingerprint templates.