



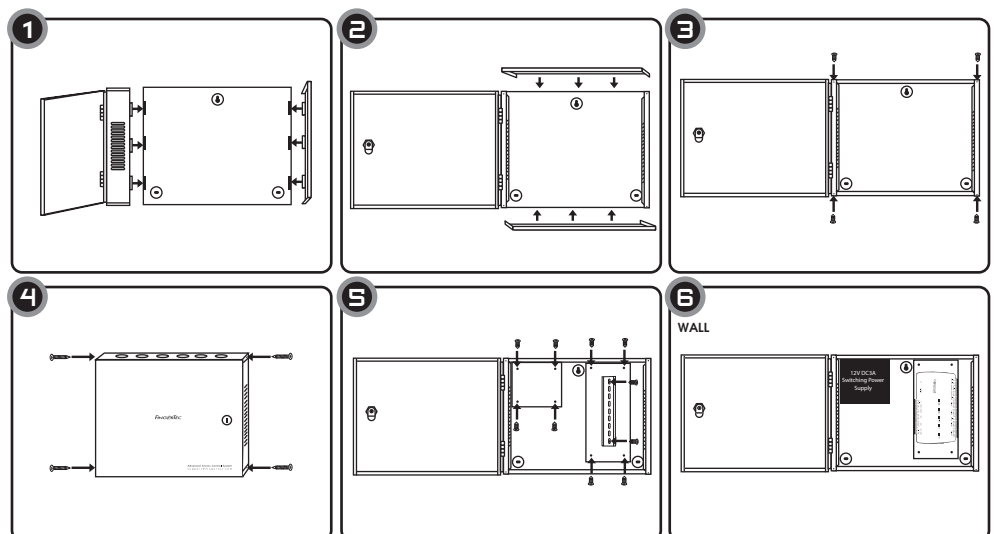
DIY Metal Casing for Ingressus

A little DIY makes a big difference



FingerTec DIY Metal Casing for Ingressus continues to deploy the same Do-it-Yourself concept as the general purpose FingerTec DIY Metal Casing, but is now designed to house Ingressus Controller together with its power supply and backup battery to ease installation. The casing is made of Zinc Alloy, embossed with the FINGERTEC logo inception, and comes with a din rail to hold Ingressus Controller. It provides a pleasant looking façade when installed on a wall, or can be concealed above the ceiling. The DIY design makes installation a breeze and also helps to reduce space and absorb impact during transportation.

INSTALLATION GUIDE



SPECIFICATIONS

DIMENSION (mm)	After installed: 350 (L) X 73 (W) X 277 (H)
	Packing box: 428 (L) x 295 (W) x 36 (H)
WEIGHT	3.2 kg
MATERIAL	Zinc metal

